



Your Solutions



URSOL is a company formed to become your sustainable solutions provider with our innovative products. We are proud to ourselves by providing solutions to you and be your preferred partner while enjoying the journey to success.

We started as a research based company located in Miri Sarawak. With our continuous improvement in competency of our research team, we strive to develop out the highest CP value and sustainable products to our customer. Till now, products manufactured by **URSOL** can be categorized into a total of 5 operating segments under our brand names of **WOOD SOLUTIONS, PAINT SOLUTIONS, CONSTRUCTION SOLUTIONS, CLEAN AND CLEANSE SOLUTIONS** and **PLANT SOLUTIONS**.

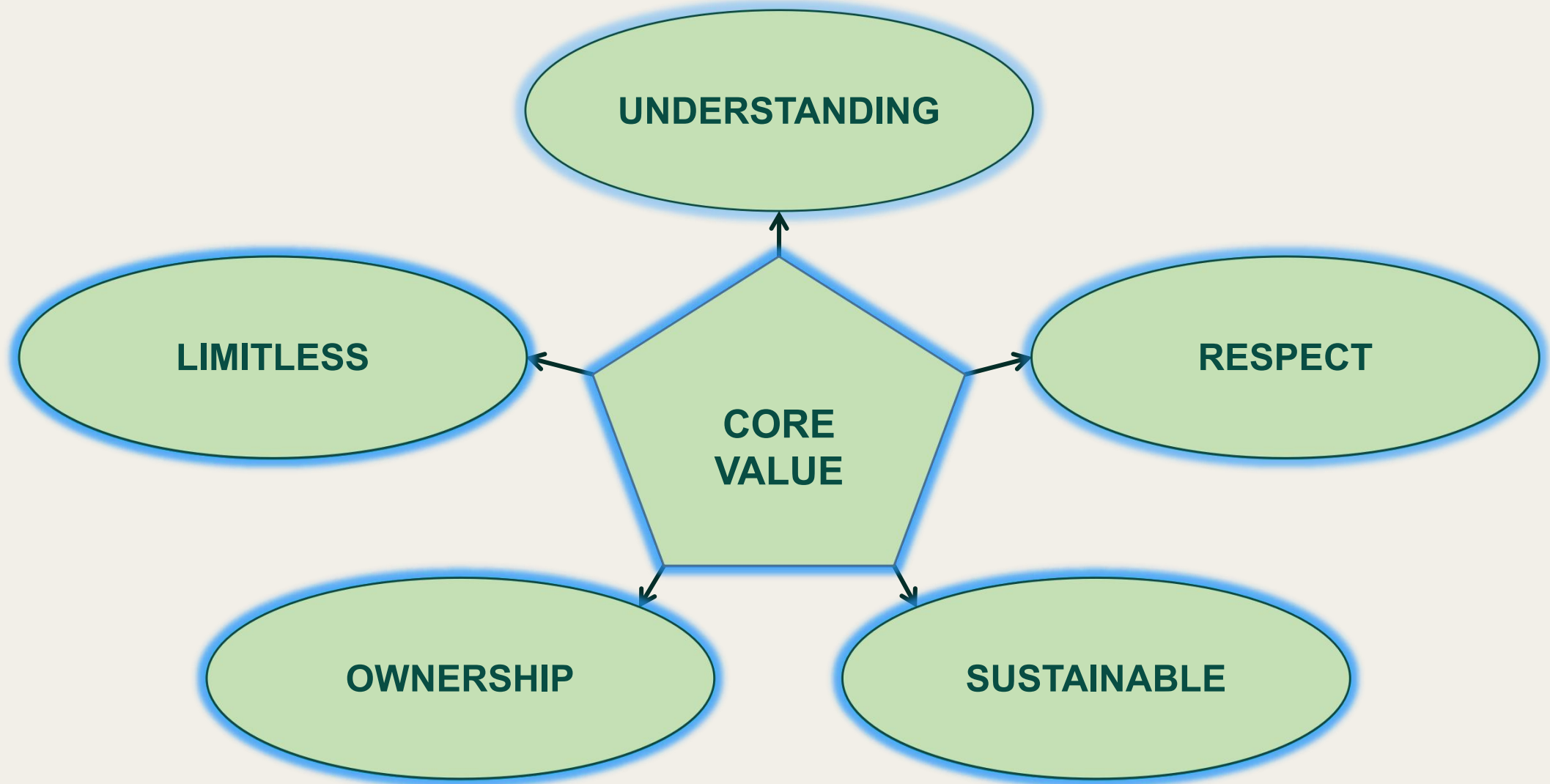
We strive to be a company required by society through contributing towards the sustainable growth of our society and environment for a better life.

VISION

To Create Sustainable Value Solutions for Better Life

MISSION

- ★ **Understanding Customer Needs** - We strive to be preferred partner of our customers through customer satisfaction from our sustainable solutions with highest CP value and consistent supply of products.
- ★ **Respect** - We strive to gain our respect and trust by honesty, integrity and competency.
- ★ **Sustainable** - We strive to be a company required by society through contributing and creating value in order to delivering the sustainable solutions for a better society and environment.
- ★ **Ownership** - We strive to become a sustainable growth and profit-oriented organization through loyalty and team work with accountability result.
- ★ **Limitless Innovation** - We strive to continue improve our products through sharing, positive and innovative thinking and never give up spirit while enjoying the journey to success.



Your Sustainable Value Solutions for Better Life

COMPANY MILESTONES



Wood Solutions

- Formaldehyde Scavenger
- Hardener
- Wood Putty

Wood Solutions

- Formaldehyde Scavenger
- Hardener
- Wood Putty
- Industrial Flour
- Log Sealant
- Veneer Tape

Wood Solutions

- Formaldehyde Scavenger
- Hardener
- Wood Putty
- Industrial Flour
- Log Sealant
- Veneer Tape

Paint Solutions

- Wood Coating
- Architectural Paint
- Wood and Metal Paint

Clean and Cleanse Solutions

- Disinfectant

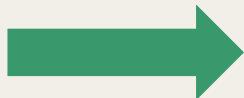
WOOD
SOLUTIONS

paintsolutions

CleanAndCleanse
SOLUTIONS

construction
solutions

Plan**it**Solutions



PRODUCTS RANGE



Provide paints products and services to all kind of industry

- Wood Coating
- Exterior Sealer
- Interior and Exterior Paint
- Wood and Metal Paint
- Protective Coating
- Heavy Machinery Coating
- Marine Paint



Provide specialty chemicals and services for wood industry

- Formaldehyde Scavenger
- Hardener
- Wood Putty
- Industrial Flour
- Palm Kernel Shell Powder
- Log Sealant
- Veneer Tape



Provide disinfectant and cleaning products

- Sanitizer (Fogging, Surface, Hand)
- Household Cleaner (Kitchen Cleaner, Floor Cleaner, Toilet Cleaner, Glass Cleaner, Dish Washing, Laundry Detergent, Multi Purpose Cleaner, Pot&Pan Cleaner, etc.)
- Industrial Cleaner (Industrial Degreaser, Metal Cleaner, Heavy Duty Multi Purpose Cleaner, Janitorial Cleaner, etc.)
- Transportation Cleaner (Car Wash, Truck Wash, Wax, Windshield Treatment and etc)



Provide specialty chemicals and services for construction industry

- Waterproofing (Cement Modifier, Cementitious Waterproofing, Elastomeric Waterproofing Coating and etc)
- Admixture (Bonding Agent and etc)
- Building Finishing (Grout, Wall Putty, Render, Skim Coat, Joint Compound)
- Sealing & Bonding (Silicone Sealant)



Provide specialty chemicals and services for agriculture sector

- Potting Media
- Potting Soil
- Soil Conditioner
- Inorganic Fertilizer
- Compound Fertilizer
- Organic Fertilizer
- Organic Pesticide

WOOD SOLUTIONS

*Enhance Your Wood Quality
with Our Solution*

PRODUCTS

- Formaldehyde Scavenger
- Hardener
- Industrial Filler
- Wood Putty
- Veneer Tape
- Log Sealant

FORMALDEHYDE SCAVENGER



FOSCA FC-100

- **Over 90% reduction** of formaldehyde emission
- Pre-treatment in glue mixture
- Compatible with a wide range of glue which are UF, MUF and LFE glue



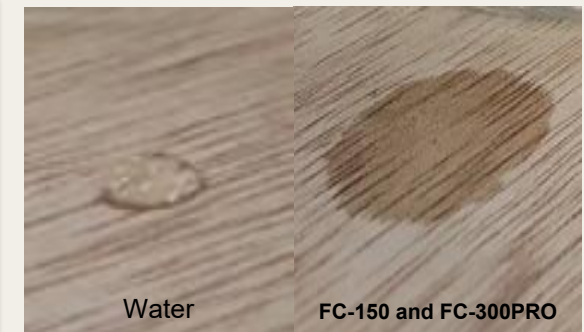
FOSCA FC-150

- Upgrade F☆☆☆ → F☆☆☆☆
- Superior wetting property and good in penetration into the wood surface
- Post-treatment on the panel after hot press
- Pre-treatment on the veneer



FOSCA FC-300 PRO

- Upgrade F☆☆ → F☆☆☆☆
- Secure in formaldehyde control, especially for floor-based panel and thin panel.
- Superior wetting property and good in penetration into the wood surface
- Post-treatment on the panel after hot press
- Pre-treatment on the veneer



Your Wood Solution To Meet The International Highest Formaldehyde Control Standard

JAS F☆☆☆☆

AS/NZS Super EO
($<0.3\text{mg/L}$)

US TSCA Title VI / CARB
ATCM Phase II
($<0.05\text{ppm}$, approx. 0.376mg/L)

Taiwan CNS F1
(0.3mg/L)

FOSCA Products	Products Descriptions	Application	Main Benefits
FOSCA FC-100	<ul style="list-style-type: none"> ➤ Formulated with stable and consistent quality to remove formaldehyde in glue effectively. 	<ul style="list-style-type: none"> ➤ Post added in glue ➤ Spray or roller coating on the products after hot press ➤ Dosage: max 18% of resin weight 	<ul style="list-style-type: none"> ➤ Stable result even after a long period of time ➤ Balance between cost and performance
FOSCA FC-150	<ul style="list-style-type: none"> ➤ Effective accelerator to remove formaldehyde ➤ Superior in wetting property and good in penetration into the treated surface 	<ul style="list-style-type: none"> ➤ Spray or roller coating on the product after hot press ➤ Spray/coating Volume: 3-6g/ft² for both face and back ➤ Spray on the green veneer before the dryer 	<ul style="list-style-type: none"> ➤ Excellent wetting properties to ensure deep penetration and coating evenness
FOSCA FC-300 PRO	<ul style="list-style-type: none"> ➤ Excellent accelerator to remove formaldehyde ➤ Superior in wetting property and good in penetration into the treated surface 	<ul style="list-style-type: none"> ➤ Spray or roller coating on the product after hot press ➤ Spray/coating Volume: 3-6g/ft² for both face and back 	<ul style="list-style-type: none"> ➤ Excellent wetting properties to ensure deep penetration and coating evenness

Water vs. FOSCA FC-300PRO – Penetration into wood



Hardener HD-1

- Used as cross linker in Urea-Formaldehyde (UF) and Melamine -Urea-Formaldehyde (MUF) resin
- Stable and consistency in pot life increment
- Improve in pre-bonding and mechanical properties
- Dosage recommended: 0.5-1.5% of resin
- * Dosage may vary depending on the glue formulation



Industrial Flour F-1

- Non wheat based Industrial Flour
- More than 40% cost saving as compared to conventional wheat-based industrial flour

PF Glue (WBP)

- 50-100% replacement of conventional wheat-based industrial flour in Phenol-Formaldehyde (PF) adhesive
- Pass JAS TS (WBP) Bonding Test

UF, MUF Glue

- 25-50% replacement of conventional wheat-based industrial flour in Urea Formaldehyde (UF) and Melamine Urea Formaldehyde (MUF) adhesive
- Pass JAS T2 and T1 Bonding Test, no effect on Formaldehyde Emission reading
- As a natural colorant in UF and MUF glue, improve process control at the glue spreader section for easy checking on the unglued area and uneven gluing.

Material Properties

- Eco-friendly and non-toxic
- 10-15% protein content



Industrial Flour F-2

- Thanks to the unique high-temperature resistance properties of the powder, which will improve the glue heat resistance in a high-temperature hot press and enhance the mechanical properties of the glued panel, especially using Phenol-Formaldehyde (PF) adhesive.
- Used in various form of applications for both technical and environmental benefits varying from additive, as well as a composite matrix
- Recommended and commonly used as a compound filler for thermoset moulding powders like bakelite, synthetic resin and glue
- Raw material for mosquito coil, incense stick and briquette



Compound filler in PF glue



Composite matrix in cement



Raw Material in briquette



Raw Material in mosquito coil

Products	Application	Specification	Dosage
Industrial Flour (F-1)	<p>PF Glue</p> <ul style="list-style-type: none"> ➤ Recommended for PF glue with 50-100% replacement of flour <p>UF, MUF Glue</p> <ul style="list-style-type: none"> ➤ Recommended for UF and MUF glue with 25-50% replacement of flour 	<ul style="list-style-type: none"> ➤ Powder with particle 60 mesh and above ➤ Viscosity (3:1): 50-60cps (Brookfield: Spindle 4, 60rpm) ➤ pH: 4.0-7.0 ➤ Moisture %: Max 13 	<p>Recommended Dosage: 25-100% replacement for flour</p> <p>* Dosage may vary depending on the glue formulation</p>
Industrial Flour (F-2)	<ul style="list-style-type: none"> ➤ Improve thermal resistance of glue ➤ Recommended for phenolic glue 	<ul style="list-style-type: none"> ➤ Powder with particle 60 mesh and above ➤ Viscosity (2:1): 30-40cps (Brookfield: Spindle 4, 60 rpm) ➤ pH: 4.0-7.0 ➤ Moisture %: Max 13 	<p>Recommended Dosage: 50-100% replacement for flour</p> <p>* Dosage may vary depending on the glue formulation</p>

WOOD PUTTY



Properties	WP-6	WP-7	WP-8
Stain Resistance	✓		
Water Resistance	✓	✓	
Anti-shrinkage	✓	✓	✓
Crack Resistance	✓	✓	✓



Y7

Color: Natural



Y3

Color: OAK

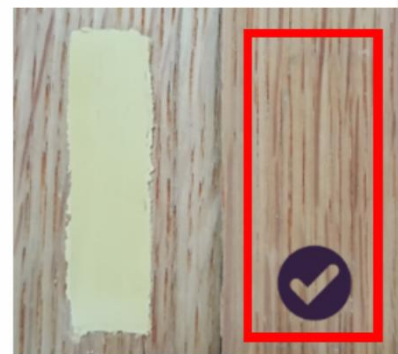


R4

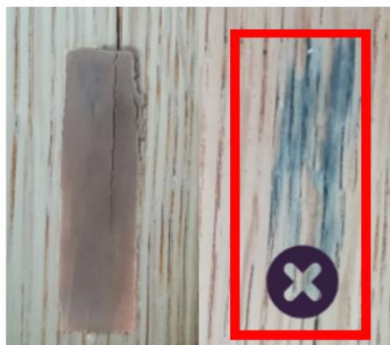
Color: TEAK

WP-6

Market Product



Prevent Putty Stain
penetrate through
the surface of
decorative veneer



Severe Putty Stain
observed on the
surface of
decorative veneer

WP-6, WP-7

Market Product



Water Resistant of
after T1, T2 and TS
water soaking

Putty loosed after
T1, T2 and TS
water soaking

WP-6, WP-7 and WP-8

Market Product



Anti shrink and
anti crack



Shrink and
crack observed

Products	Product Description	Application	Main Benefits
WP-6	<ul style="list-style-type: none">➤ Formulated with specialty materials to meet requirements for the wood industry which possesses excellent performance such as stain-resistance, water-resistance, adhesion and etc.	<ul style="list-style-type: none">➤ Strongly recommend for plywood, floor-based panel, furniture panel, block board and etc.➤ Stain resistance for plywood/wood panel used in decorative veneer lamination (especially Oak Veneer)	<ul style="list-style-type: none">➤ Chemical stain resistant➤ Excellent water resistant➤ Excellent anti shrinkage
WP-7	<ul style="list-style-type: none">➤ Formulated to meet general use for wood industry which possess excellent performance such as water resistant, shrinkage, adhesion, hardness and etc.	<ul style="list-style-type: none">➤ Recommend for general use in the wood industry, furniture industry, household and etc.➤ Special for the wood panel which require water resistance performance	<ul style="list-style-type: none">➤ Excellent in water resistant➤ Excellent in anti shrinkage
WP-8	<ul style="list-style-type: none">➤ Formulated to meet economic and general use for wood industry which possess good performance such as shrinkage, adhesion, hardness and etc.	<ul style="list-style-type: none">➤ Recommend for general use in wood industry, furniture industry, household and etc.	<ul style="list-style-type: none">➤ Anti shrinkage➤ Cost effective

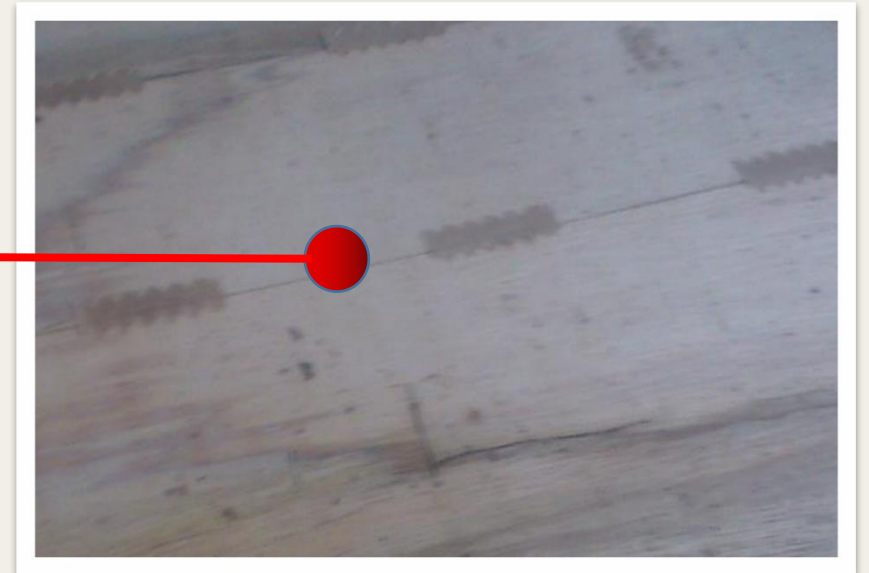
Our Technical Team Provide Product Development And Solution For All Your Wood Putty Related Problems

Tape Edge Composer (TEC) Gummed Tape

- Increase productivity and production recovery compared to conventional hot melt composer
- To join or repair green veneer
- Special heat-activated paper tape to provide a strong join of green veneer before dryer
- Excellent water resistant
- Stay strong even after the drying process therefore can prevent overlap defects on veneer



Tape width: 2" (50mm)



Log Sealant LS-1

- Non-toxic Elastomeric water-based sealer that protects freshly cut logs and lumber from damaging end splits
- Reduce the water loss from logs to keep the log freshness
- Can be applied to all species of hardwood or softwood
- Prevent blue stain and sap stain caused by damaging fungi
- Coverage: 1 kg of paint are able to cover 1-2 m² of surface



Without Log Sealant



It can be applied on the fresh cut saw timber to prevent further split

With Log Sealant



**QUALITY
ASSURANCE
&
TECHNICAL
SUPPORT**

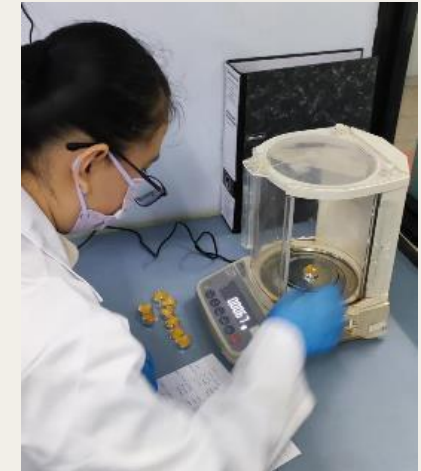


*Our Quality Assurance,
Your
Sustainable Value Solutions*

QUALITY ASSURANCE



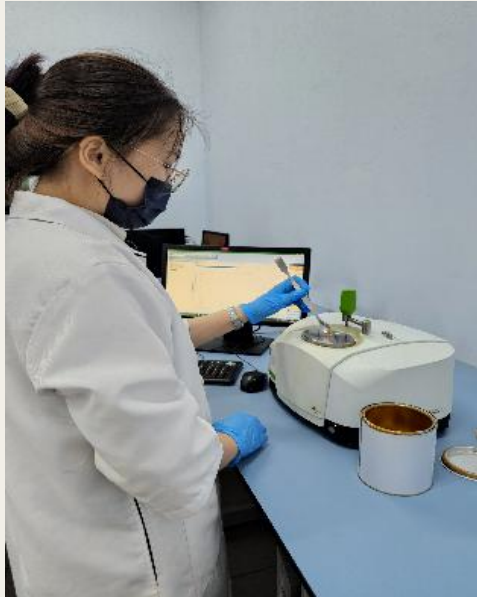
- We believe that quality product is our strategy for success where every batch of raw materials will go through strict quality control checking to ensure our products can meet the quality assurance and customer satisfaction
- Every shipment of our product is accompanied by a COA under our QA department to assure the customers about the proper and consistent quality of the product.



RESEARCH AND TECHNICAL SUPPORT



- Research and product development are our business backbone. Researchers and professionals are doing research and product development every day in our laboratories to ensure that we can provide more and more solutions to our customers and society.





Your Solutions Partner

